

VICON
MAGNIFICENCE OF ART

Reimagining
your desire
space



DURASTONE
HEAVY DUTY VITRIFIED TILES

ULTRA
STRONG
OUTDOOR VITRIFIED TILES



impressive

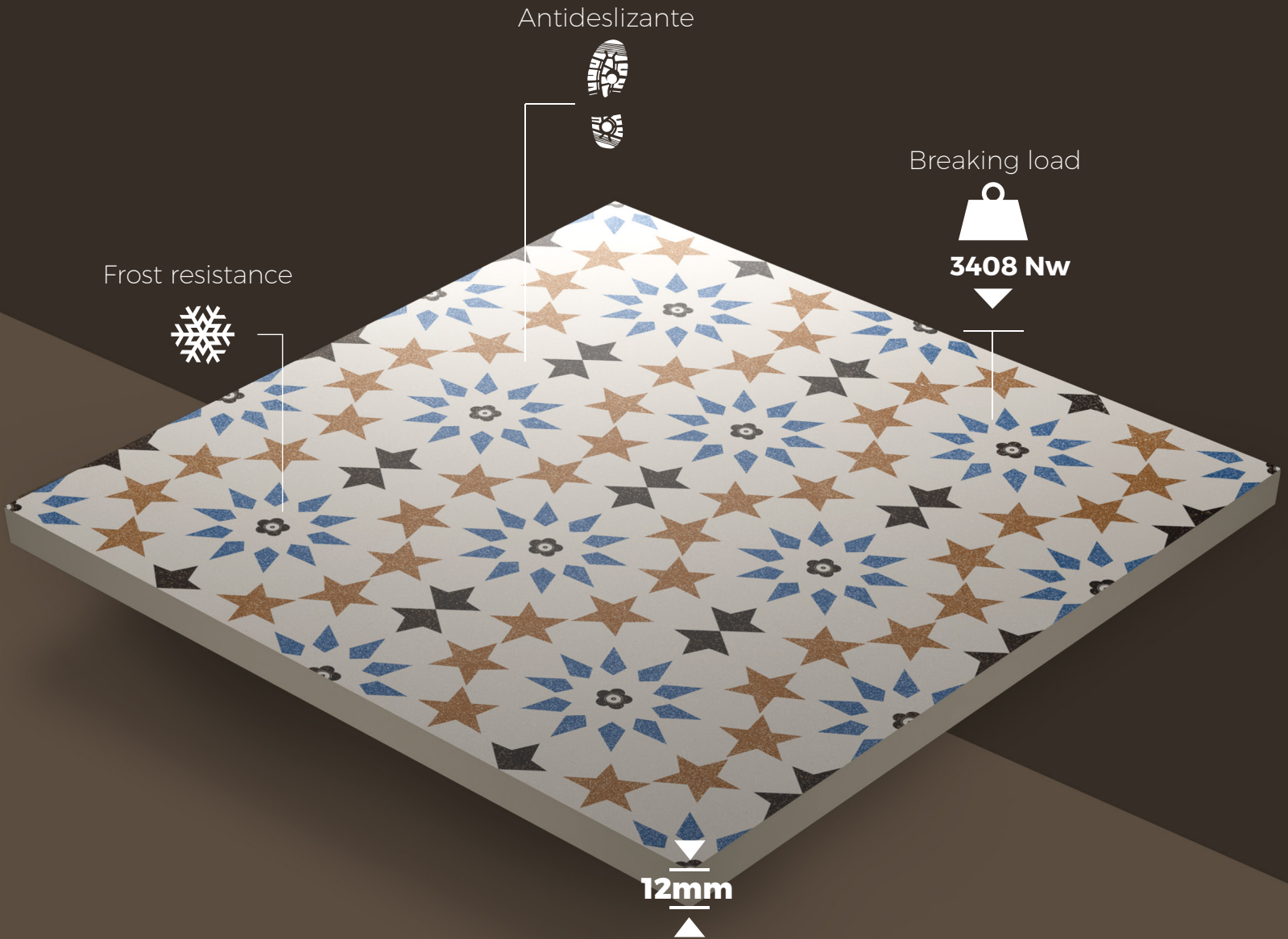
plain surface

Vicon introduces a special finish avoiding the typical roughness on the anti-slip product, and obtaining a flat and soft surface.

An unexpected touch
on decoration which
helps us
to create natural spaces.

400 x
400mm

**ULTRA
STRONG**
OUTDOOR VITRIFIED TILES



APPLICATION



RESIDENTIAL AREAS



URBAN AREAS



TERRACE & PATIOS



COMMERCIAL AREAS



SWIMMING POOLS



GARDENS



HIGH TRAFFIC AREAS



HEALTH CENTERS



RESTORANT

PLAIN SERIES



— **ULTRA** —
STRONG
— OUTDOOR VITRIFIED TILES —



ANTI SLIP



STRENGTH



FLOOR



RANDOM



PUNCH



MATT



APPOLO LT



APPOLO HL1



APPOLO HL2



APPOLO DK



BROOKLIN HL



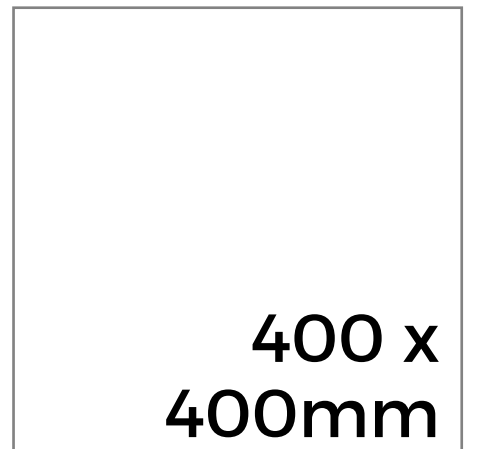
BROOKLIN BROWN



BROOKLIN GREY



ULTRA
STRONG
OUTDOOR VITRIFIED TILES



ANTI SLIP



STRENGTH



FLOOR



RANDOM



PUNCH



MATT





BROOKLIN BROWN

CINTIA BEIGE

RANDOM



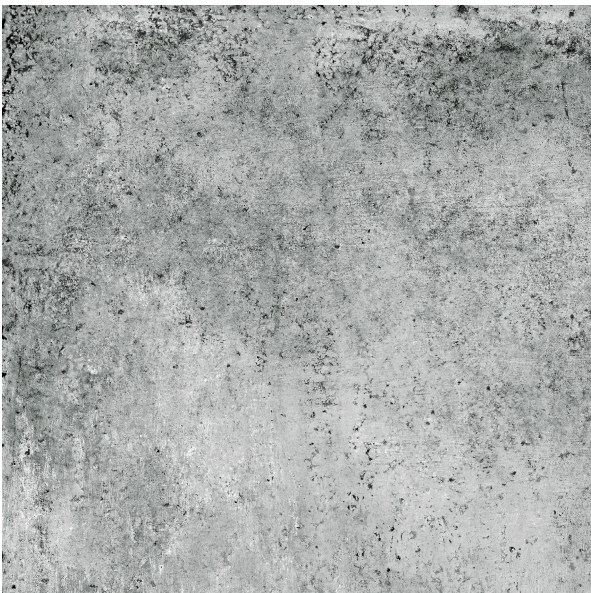
CINTIA RUST

RANDOM

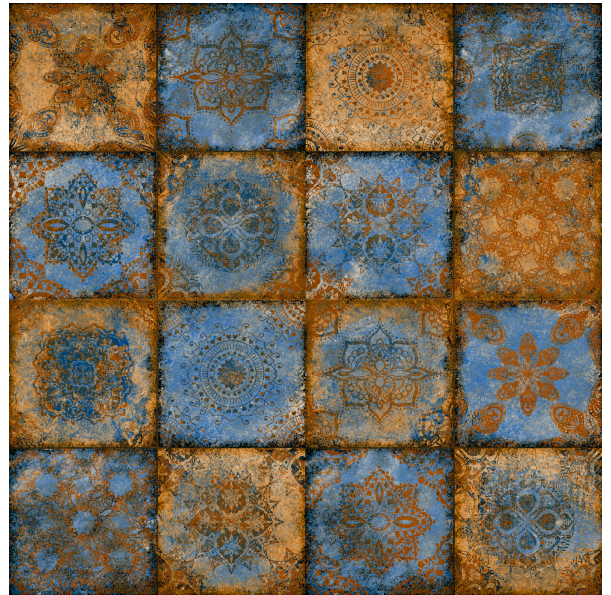


CINTIA SHADOW

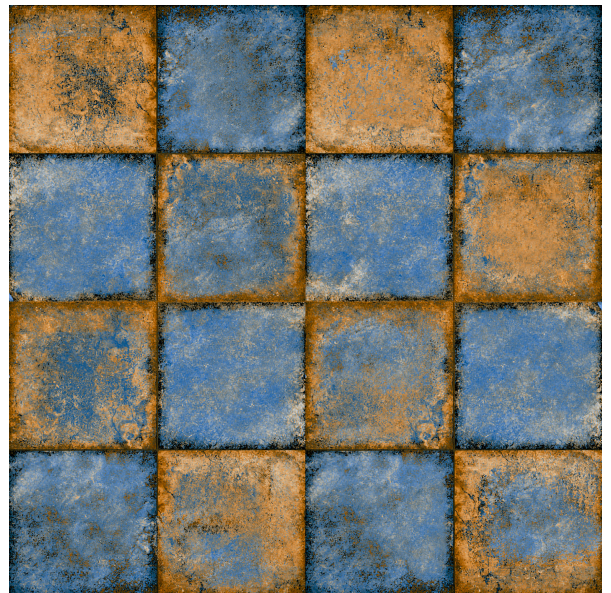
RANDOM



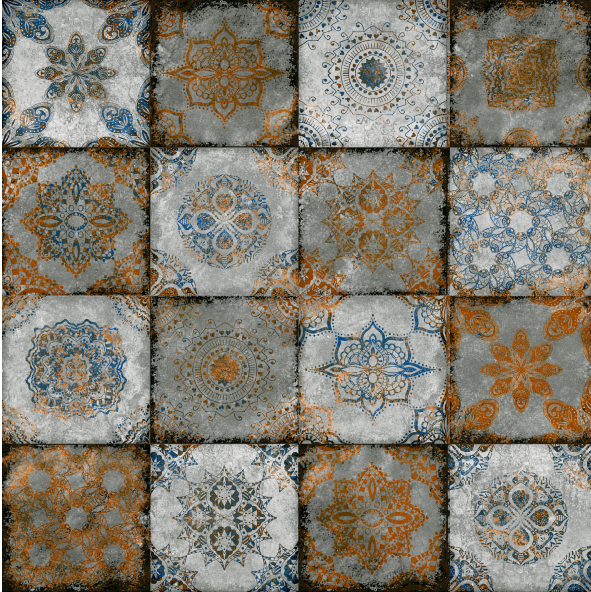
LIVELLO BLUE HL



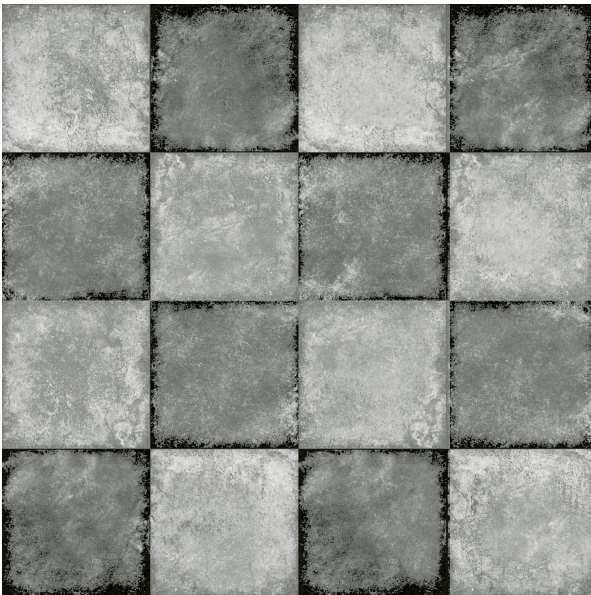
LIVELLO BLUE DK



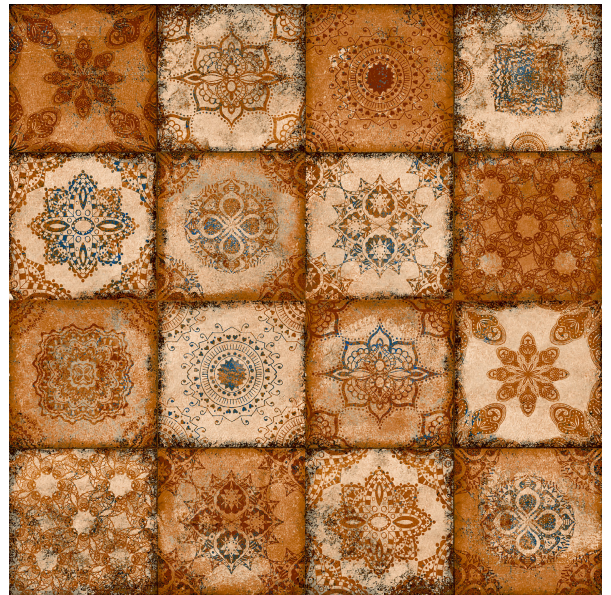
LIVELLO GREY HL



LIVELLO GREY DK



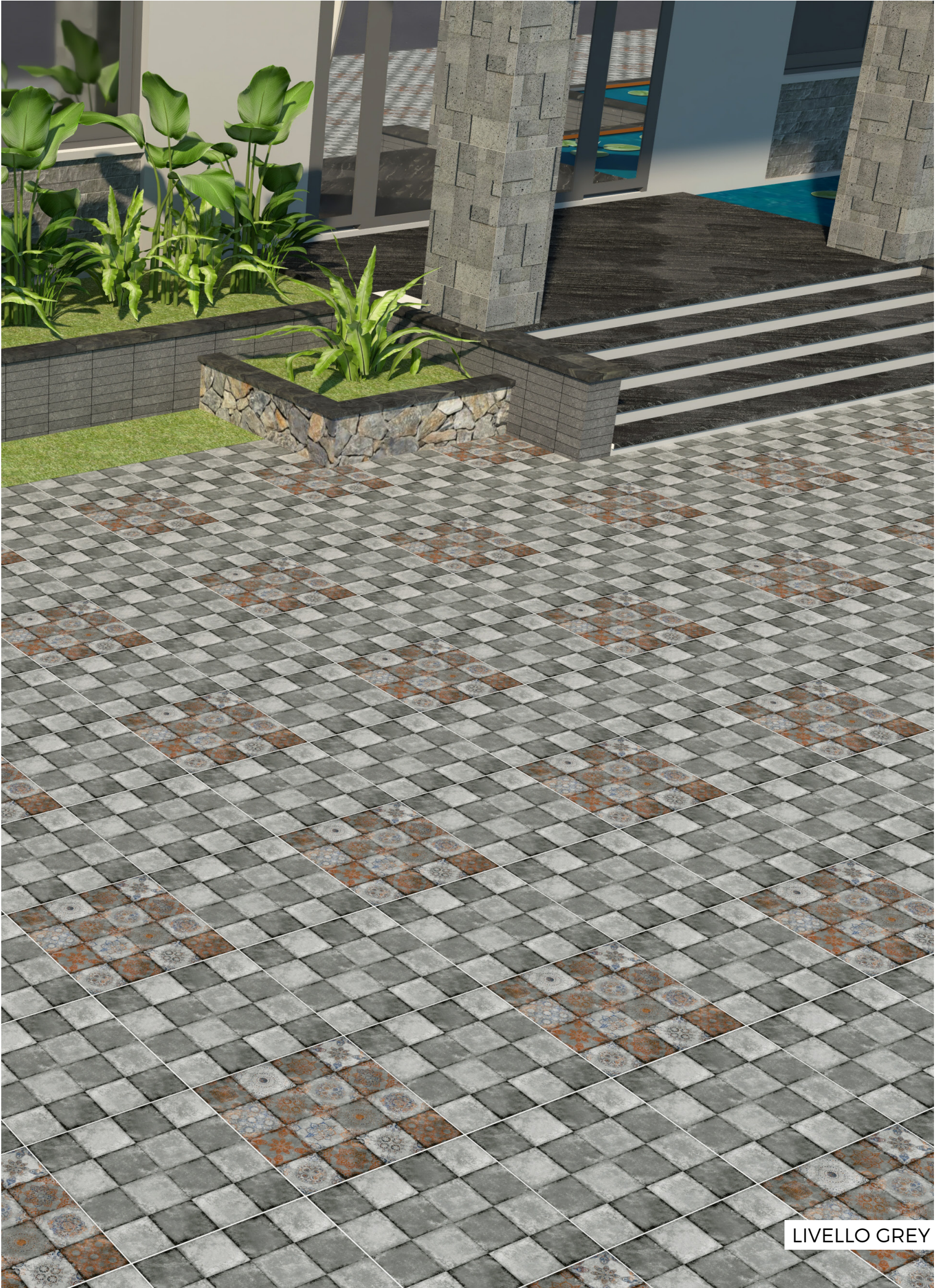
LIVELLO RUST HL



LIVELLO RUST DK

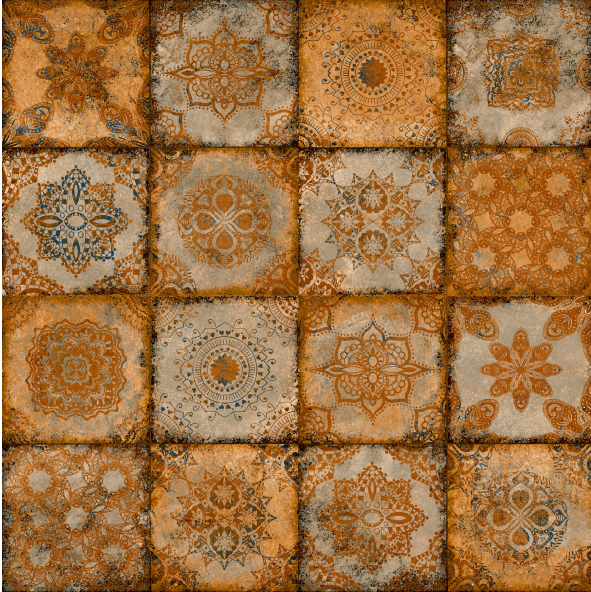






LIVELLO GREY

LIVELLO BROWN HL



LIVELLO BROWN DK



MATIKA BLUE



ULTRA
STRONG
OUTDOOR VITRIFIED TILES



400 x
400mm



ANTI SLIP



STRENGTH



FLOOR



RANDOM



PUNCH

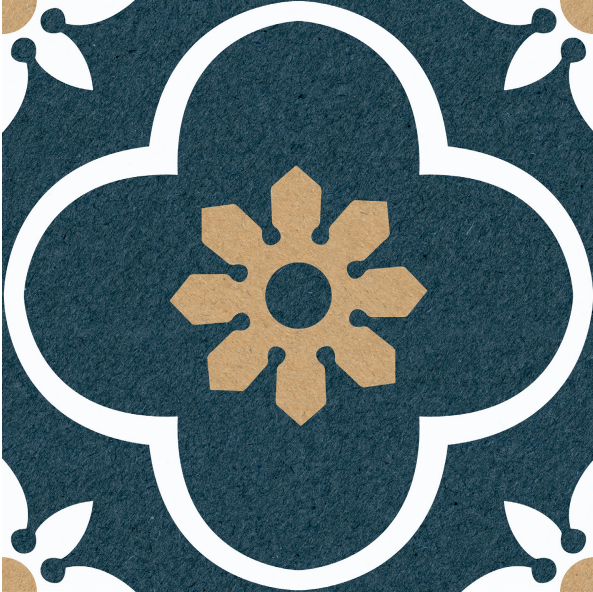


MATT



MATIKA BLUE

MONIR BLUE



MUTAN ANTIK

RANDOM



MULTAN CARAMEL

RANDOM



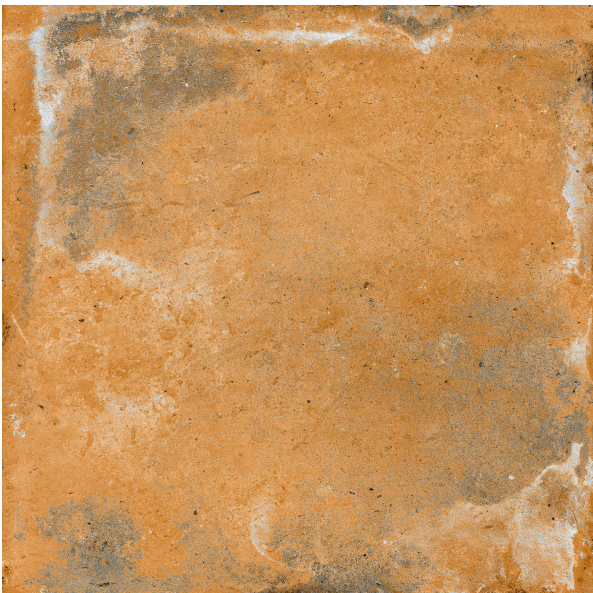
VEGA BEIGE

RANDOM



MULTAN ORANGE

RANDOM



VEGA BLUE

RANDOM



DURASTONE

HEAVY DUTY VITRIFIED TILES

VICON
MAGNIFICENCE OF ART

VEGA BROWN

RANDOM

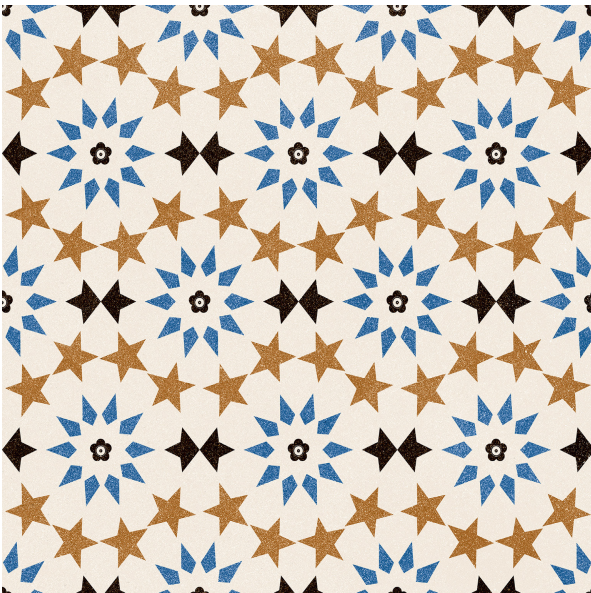


VEGA COFFE

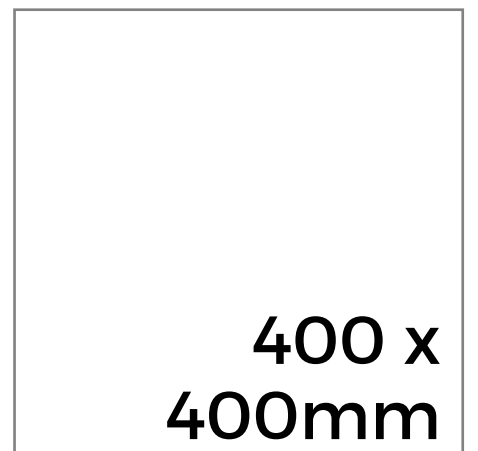
RANDOM



VITO BEIGE



ULTRA
STRONG
OUTDOOR VITRIFIED TILES



ANTI SLIP



STRENGTH



FLOOR



RANDOM



PUNCH



MATT





VEGA BLUE

PACKAGING DETAIL FOR 400x400MM FLOOR TILES

| Nominal Size (mm) | Thickness(mm) | Avg.weight per carton(Kgs) | No.of tiles per carton | Coverage area per carton |
|-------------------|---------------|----------------------------|------------------------|------------------------------|
| 400X400 (Digital) | 11.8 | 20.0 | 5 | 0.80 Sq. Mtr. / 8.61 sq. ft. |

TECHNICAL SPECIFICATION FOR 400x400MM FLOOR TILES

| Characteristics | Requirement as per ISO 13006:2018 ≤ 0.5% Group B I a | Requirement as per IS 4457:2007 (Reaffirmed- 2012) ≤ 0.5% | Our Values | Test Method |
|---|--|---|--|-----------------------------------|
| Dimension & Surface Quality | | | | |
| Length & Width | ± 0.3% | ± 0.5% | ± 0.10% | ISO 10545-Part 2/IS 4457 Annex B |
| Thickness | ± 5.0% | ± 5.0% | ± 4.0% | |
| Straightness of Side | ± 0.30% | ± 0.20% | ± 0.10% | |
| Rectengularity | ± 0.30% | ± 0.20% | ± 0.10% | |
| Surface Flatness | | | | |
| Center Curvature (%) (Max. Dev.) | ± 0.40% | ± 0.30% | ± 0.2 % | |
| Edge Curvature (%) (Max. Dev.) | ± 0.40% | ± 0.30% | ± 0.2 % | |
| Corner Warpage (%) (Max. Dev.) | ± 0.40% | ± 0.30% | ± 0.2 % | |
| Surface Quality | Min. 95 % of tiles will be free from visible defects | Min. 95 % of tiles will be free from visible defects | Min. 95 % of tiles will be free from visible defects | |
| Physical Properties | | | | |
| Water Absorption | Avg. 0.5%, Individual 0.6% max | Avg. 0.5%, Individual 0.6% max | Avg.<0.5% | ISO 10545-Part 3/IS 4457 Annex C |
| Modulus of Rupture [N/mm ²] | Av 35, Individual 32 min | Av 35, Individual 32 min | Avg.>35 | ISO 10545-Part 4/IS 4457 Annex D |
| Breaking Strength in N | Min 1300 N | Min 1300 N | Min, 2500 N | |
| Moisture Expansion in mm/m | Test Method Available | Not Available | Max. 0.02 | ISO-10545-Part 10 |
| Scratch Hardness of Surface (Mohs) | N/A | Not Available | Min 6 | IS 13630 Part-13 |
| Resistance to Deep Abrasion of un glaze tiles, removed volume in mm ³ | Max. 175 | Max. 175 | Max. 140 | ISO 10545-Part 7/IS 4457 Annex E |
| Coefficient of Linear Thermal Expansion from Embiant Temperature to 100 ^o C | Test Method Available | Not Available | Max 6 X 10 ⁻⁶ K ⁻¹ max | ISO 10545-Part 8 |
| Thermal Shock Resistance | Required | Not Available | 10 cycle passed | ISO-10545-Part 9 |
| Crazing Resistance | N/A | Not Available | 4 cycle passed | ISO 10545-Part 11 |
| Imapct Resistance as Co-efficient of Restitution (COR) | Test Method Available | Not Available | Min 0.55 | ISO 10545-Part 5 |
| Frost Resistance | Required | Not Available | 100 Cycle Passed | ISO 10545-Part 12 |
| Stain & Chemical Resistance | | | | |
| Stain Resistance | Min Class 3 | Not Available | Min Class 2 | ISO 10545-Part 14 |
| Resistance to Household chemicals | Minimum B | Test Method Available | Class UA | ISO 10545-Part 13/IS 4457 Annex F |
| Resistance to acids and alkalis (with exception of hydrofluoric acid and its compounds) | Declared Value ¹ | Test Method Available | Class ULA (Low Conc) Class UHA (High Conc) | |
| Resistance to Concentrated HNO ₃ & H ₂ SO ₄ | Not Available | Loss of mass not exceeds 1.5% | Loss Less Than 1.0% | |

The reproduction of tiles in this catalogue is restricted to four color printing only and tiles are not in relative sizes, therefore customers are advised to see the physical sample before placing the order. " Technical Specification" for Vicon parking tiles are applicable only for premium quality tiles. Please inspect all tiles prior to installation. Company will not entertain complaints once tiles are laid/fixed. Complaints will not be entertained for Borders, Highlighters & Motifs.

vicon
MAGNIFICENCE OF ART